

# Requiem Window Project

Oct. 25, 2013

Lighting Design by Jessica Harpenau

Directed by Donald Nally



## The Project

Early this fall, I was chosen by my mentors at Northwestern University to head up a project to light the Alice Millar Chapel chancel window during the University Chorale's performance of Maurice Duruflé's *Requiem Op. 5*. *Requiem* is a beautiful, moving piece about the agony of man and redemption. It is set in nine movements and uses numerous themes from the Gregorian "Mass for the Dead."

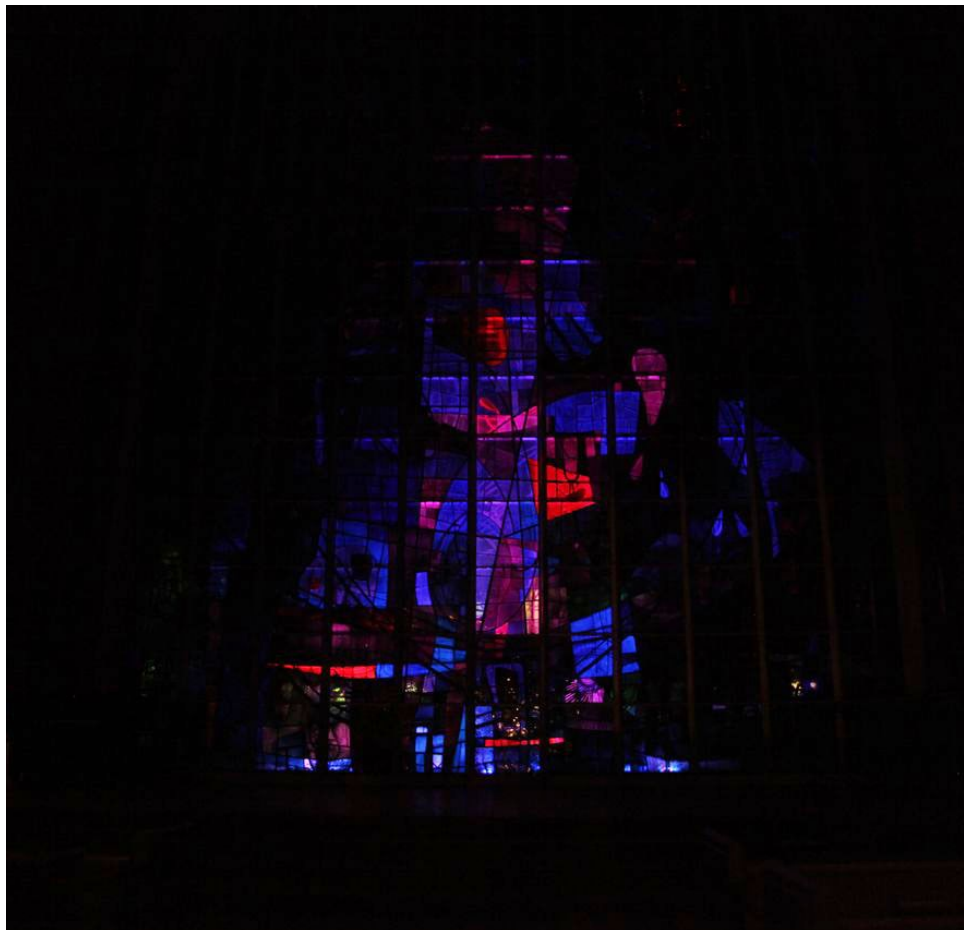
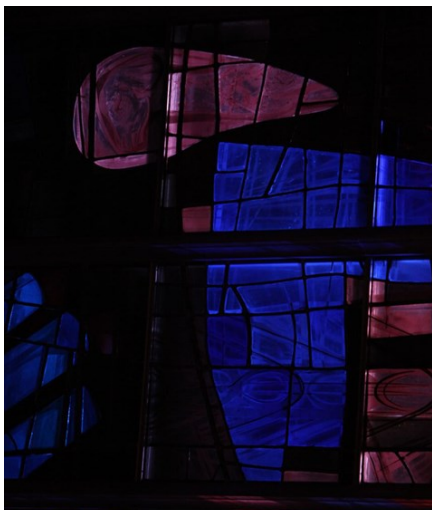
During the performance, the chorale was situated in the organ loft of the Chapel at the opposite end of the 50'x30' stained glass window. Rather than having the audience members sit in the pews facing a dark window, the director wanted this exquisite window to come to life and move with the music. Beginning in darkness, my design was successful in achieving several different looks that corresponded to and enhance the movement and the emotional changes in the music.

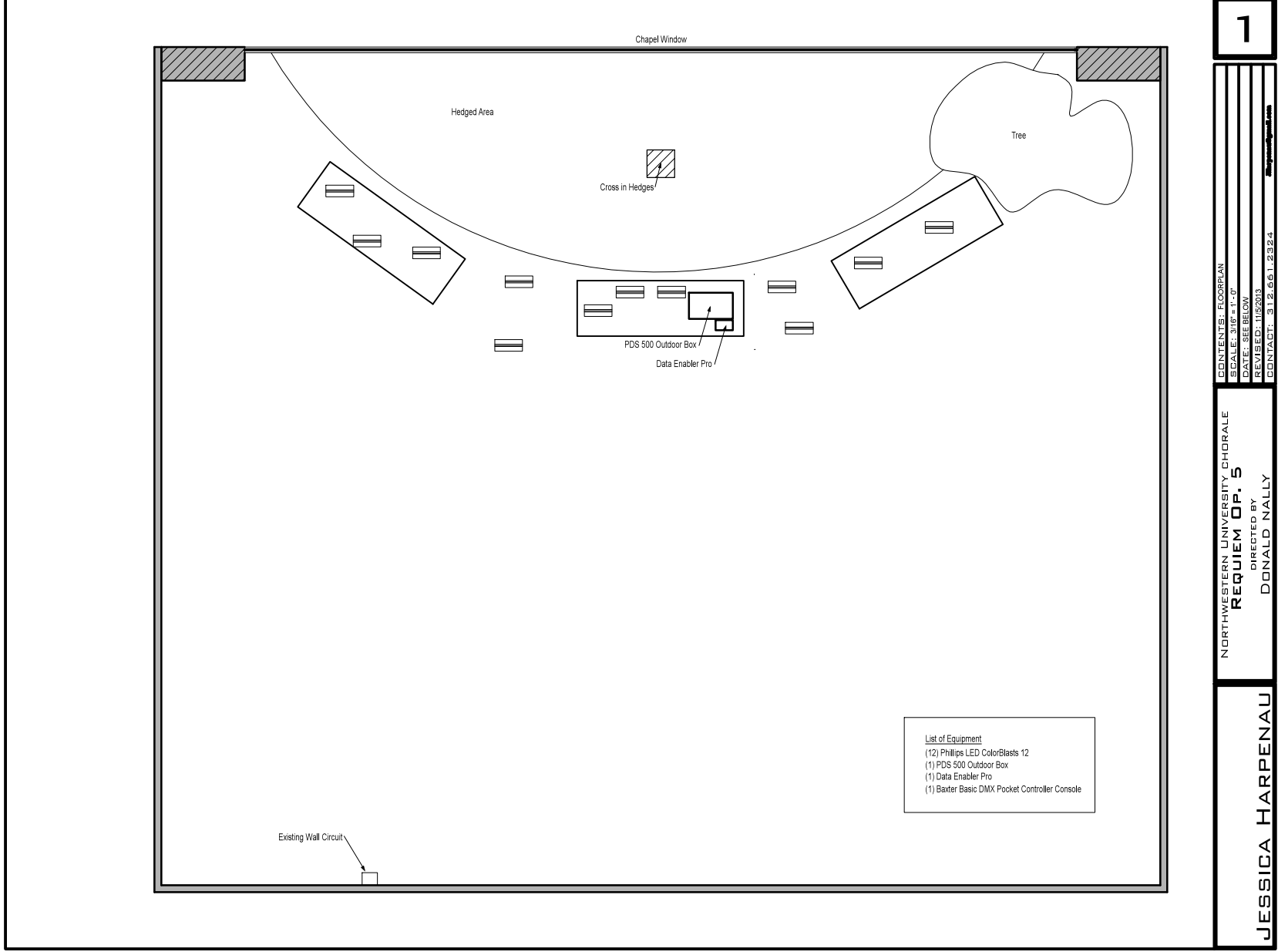


The chancel window inside the chapel without any light coming from the outside courtyard.

## Parameters and Design

With a limited budget and only one outdoor circuit in the courtyard behind the window, I chose to use several Phillips ColorBlast 12 LEDs rather than one powerful incandescent fixture. The ColorBlasts also gave me the tool of color mixing to achieve different looks. Although the stained glass was encased in 1" protective glass plating on either side, I was able to create sufficient intensity and several colors using RGB mixing. The lights were addressed so that red, green, and blue were separate channels. I also had to elevate the ColorBlasts in the courtyard with 2'6" platforms to shoot light above the shrubbery at the base the window. Refer to the schematic layout and list of equipment on the next page





- List of Equipment
- (12) Phillips LED ColorBlasts 12
  - (1) PDS 500 Outdoor Box
  - (1) Data Enabler Pro
  - (1) Baxter Basic DMX Pocket Controller Console

CONTENTS: FLOORPLAN  
 SCALE: 3/8" = 1'-0"  
 DATE: SEE BELOW  
 REVISED: 11/20/03  
 CONTACT: 312.661.2324

NORTHWESTERN UNIVERSITY CHORALE  
**REQUIEM OP. 5**  
 DIRECTED BY  
 DONALD NALLY

JESSICA HARPENAU